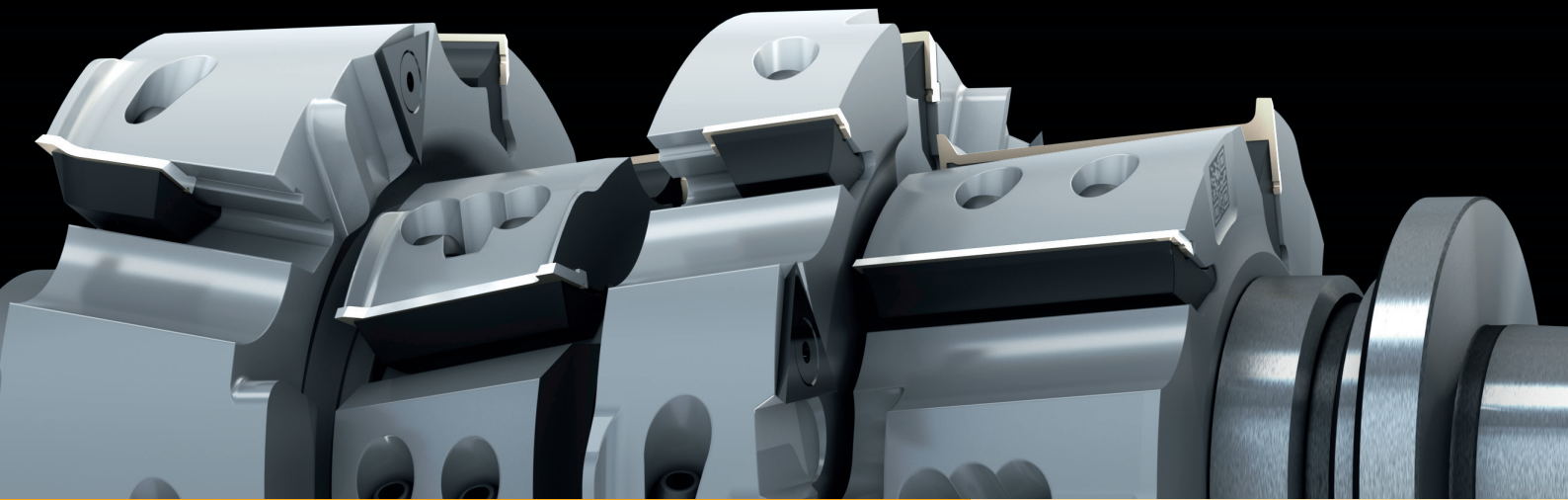


PROFILCUT 

leitz



## ProfilCut Q

**Best precision and cutting quality in the production of windows, doors, furniture and flooring**

# PROFILCUT Q – FOR A BETTER PERFORMANCE

## The system with an unbeatable variety

**When cutting quality matters, the cutter head system ProfilCut Q is setting the standard. It exceeds all expectations, even if the most extraordinary requirements on profiling are needed. No matter if in the manual or industrial manufacturing of windows, doors or in the furniture production – with ProfilCut Q, there are only highly precise results. Its many possible applications and its high reliability guarantee the profitability leading companies take advantage over years.**

ProfilCut Q has a diameter range from 0 to 650 mm. The uniform clamping system is designed for any exchangeable knives and turnblades. Its little weight is a big plus of the system.

Due to a supporting body of light metal, its employment at high cutting speed is always guaranteed.

The tongue and groove joint between clamping wedge and knife clamps spans the whole cutting width. That's the premise for a safe and positive clamping. The tightening of the clamping screws automatically secures an axial and radial centering and consequently a zero tolerance fitting. The bottom line is a technical innovation, which yields a substantially enhanced surface-quality and a reduction of rejects and rework. Matching the

profile, the clamping wedges as well as the guiding elements conduce the chip removal, which contributes to a perfect finish.

The special tool design with its rounded edges reduces noise. The wear parts of ProfilCut Q are built in steel. The balancing of ProfilCut Q is effectively limiting vibrations, is protecting the spindle bearings and leads to a better surface-quality and prolonged performance times.

### More profitability

Limited production expenditures due to

- longer tool life by Marathon „high power“ coating,
- reduced maintenance,
- less machine down time,
- economy by combining standard straight and profiled throwaway knives.

### More quality

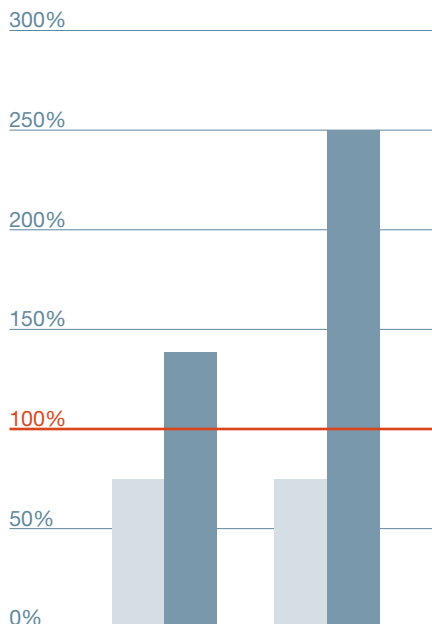
Minimum rejects, less rework and machined surfaces to finish quality by

- extra-sharp cutting edges by polished face,
- innovative coating-technology for longer performance and cut quality,
- balanced to prevent vibration, therefore an enhanced cut quality surface finish.

### More usability

Short set-up times combined with user friendliness due to

- automatic knife adjustment without setting gauges,
- changing the knives while the tools is in the machine possible,
- lightweight construction of the tool body,
- clamping screws are dust-protected,
- perfect repetition accuracy, after every knife change,
- noise reducing design.



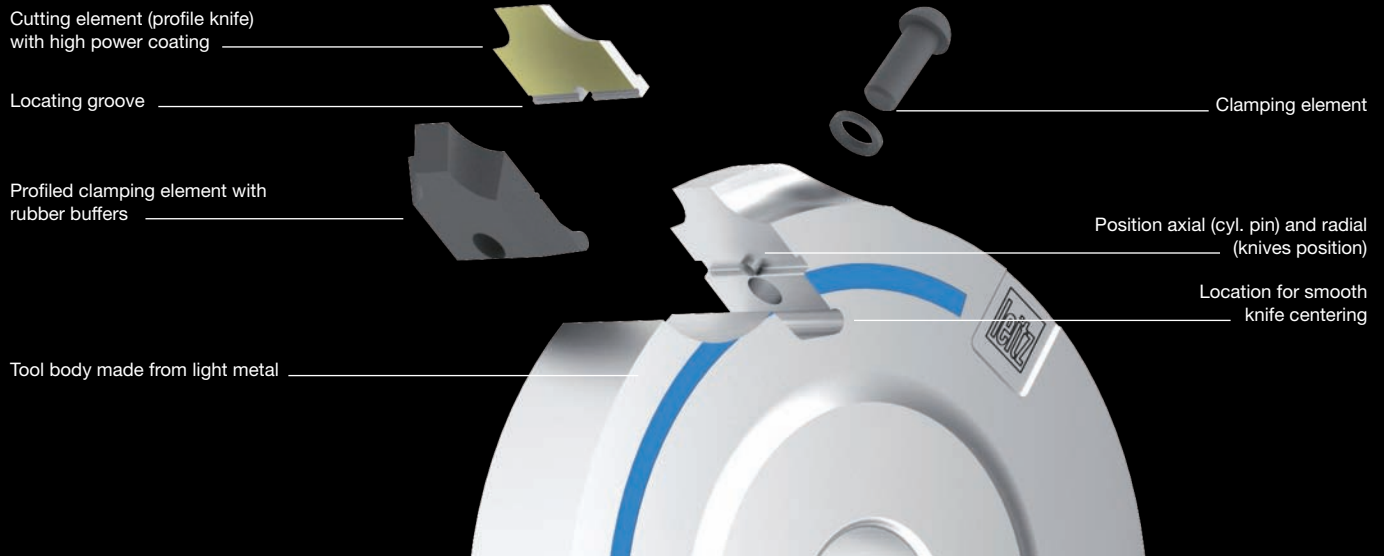
expenditure / m

tool life

Level of performance and expenditure of customary, uncoated knives



# TECHNICAL SPECIFICATIONS



## RADIUS

- Shank tool 0 - 400 mm
- Tools with bore 70 - 650 mm

## CUTTING WIDTH

- 8 - 80 mm ProfilCut Q
- 8 - 120 mm Turnblade

## CLOSED PROFILES

- Z2 - from zero diameter 60 mm up
- **Max.** number of teeth depends on diameter

## TOOL BODY

- Aluminium

## NUMBER OF TEETH

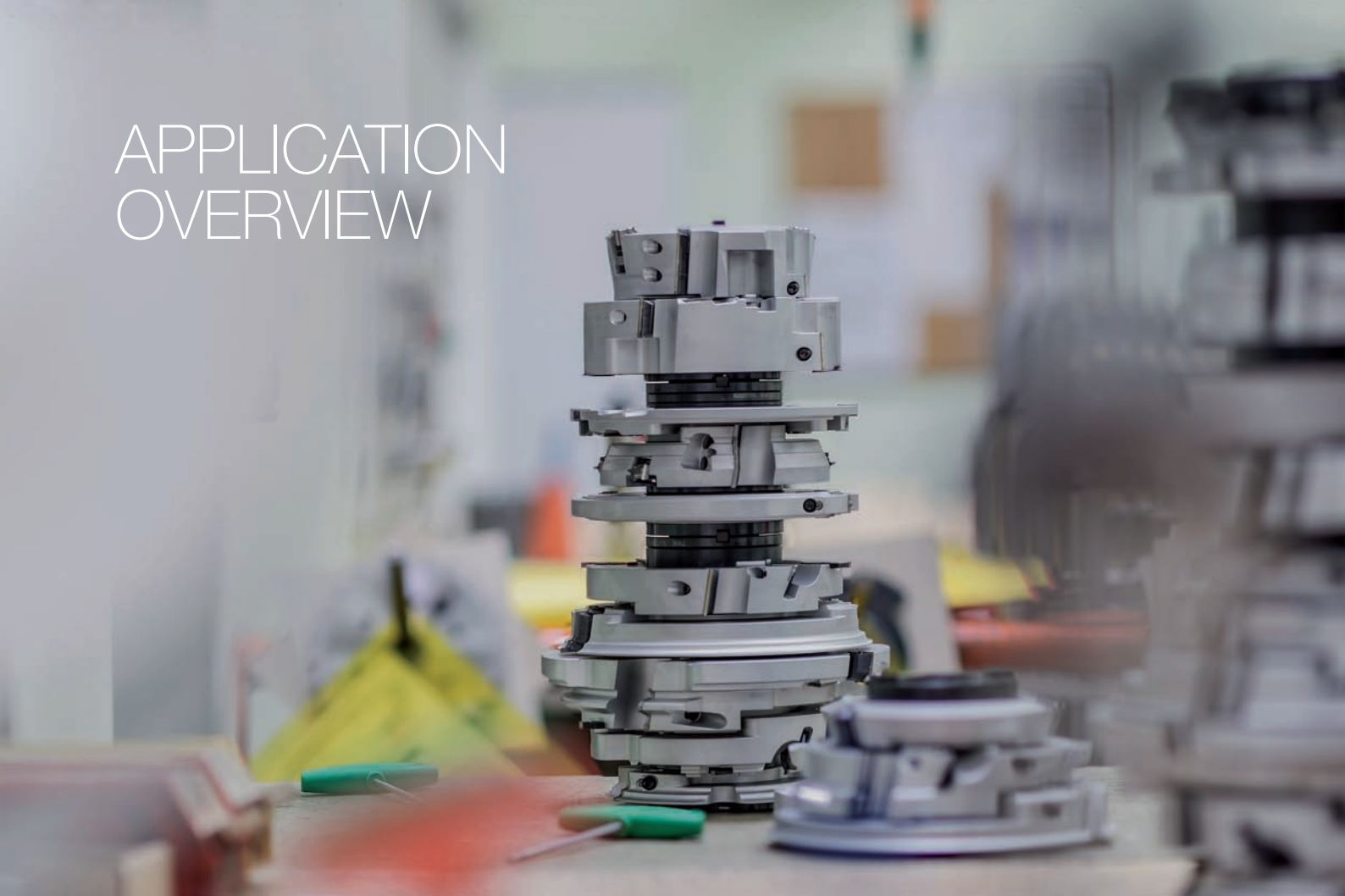
- Single-sided profiles:
- Z1 - up to zero diameter to 40 mm
  - Z1/1 - from zero diameter to 40 mm
  - Z2 - from zero diameter to 50 mm

## PROFILE DEPTH

- PT max. 20 mm (straight tool body)
- PT > 20 mm (cranked tool body)

FOR SPECIAL SURFACE QUALITY DEMANDS, WE RECOMMEND SPLITTING THE CUTTING EDGE (2-PART DESIGN INSTEAD OF A 1-PART DESIGN – INDEPENDENT OF THE CUTTING WIDTH).

# APPLICATION OVERVIEW



## Profile:

- Glue joint profiles
- Window profiles
- Panel raising profiles
- Slot and tenon profiles
- Interior and exterior profiles
- Post- and softforming profiles

## Work processing

For every profiling tasks in small, medium-sized and large-scale production with a cutting speed ( $v_c$ ) up to 90 m/s.

## Machine types

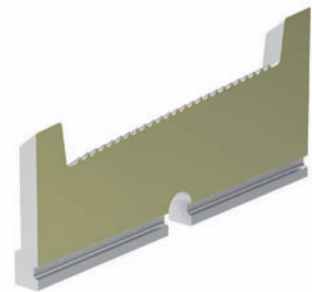
For all conventional cutting machines with manual feed (MAN) or mechanical feed (MEC).

## Raw materials

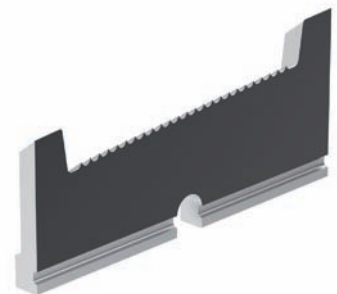
- Hard and softwoods
- Wood derived materials such as: plywood, fibreboard, block board and chipboard
- Polymers such as: Duro- and Thermoplastics, laminated wood based panels as well as composite materials

## Coating

Marathon MC (Multicoating) for demanding profiling tasks in small and medium sized companies. Marathon TDC (Tungsten Diamond Coating) for the processing of hardwoods, abrasive materials and for large scale production.



Marathon MC-coating – highest quality for soft woods



Marathon TDC-coating – specialist for hard woods and abrasive materials

**Leitz is your competent partner**



Leitz offers partnership and market leading tool knowledge and technology offering 3 components for your success:

- Innovative tooling systems, resource saving plus enhanced quality for better production
- Bespoke, modular or comprehensive Tool Management for enhanced efficiency
- Excellent service, reliable, near to customers all around the world



Leitz GmbH & Co. KG  
Leitzstraße 2  
73447 Oberkochen, Germany  
Tel. +49 7364 950-0  
Fax +49 7364 950-662  
leitz@leitz.org  
www.leitz.org

Leitz GmbH & Co. KG  
Leitzstraße 80  
4752 Riedau, Austria  
Tel. +43 7764 8200-0  
Fax +43 7764 8200-111  
office.riedau@rie.leitz.org  
www.leitz.org



We shape the future